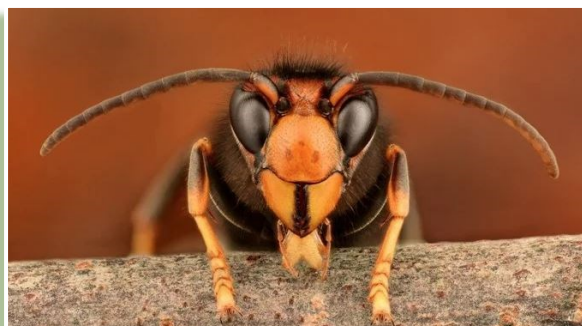




## Asian Hornets on the South Coast

On Thursday 13<sup>th</sup> April the National Bee Unit received a credible Asian hornet sighting from Folkestone, Kent. The following week the Unit received a credible sighting with a photo taken on the deck of a ferry from Poole, Dorset to Cherbourg on 10<sup>th</sup> April. There has also been an earlier sighting in Northumberland. Since then, further credible descriptive sightings have been forwarded to the NBU without photos.



Beekeepers and the public are asked to remain vigilant and monitor for Asian hornets across the south of England. Please report suspected sightings using the 'Asian hornet Watch' app for iPhone <https://apps.apple.com/gb/app/asian-hornet-watch/id1161238813> and Android [https://play.google.com/store/apps/details?id=uk.ac.ceh.hornets&hl=en\\_GB](https://play.google.com/store/apps/details?id=uk.ac.ceh.hornets&hl=en_GB)

Or report using the online reporting form: [http://risc.brc.ac.uk/alert.php?species=asian\\_hornet](http://risc.brc.ac.uk/alert.php?species=asian_hornet)

Record your monitoring trap locations on BeeBase by logging in and updating 'my apiaries' <https://www.nationalbeeunit.com/log-in/>.

Further information regarding the yellow-legged Asian hornet can be found on Defra's Asian hornet sightings page: <https://www.gov.uk/government/publications/asian-hornet-uk-sightings/asian-hornet-sightings-2020> and on BeeBase's Asian hornet page: <https://www.nationalbeeunit.com/diseases-and-pests/asian-hornet/>.

### Inside this issue:

<i>Honey Bee Winter Losses</i>	2
<i>Citizen Science 'Optimow'</i>	2
<i>Chairman's Chat</i>	3
<i>Wisborough Green opens new teaching apiary</i>	4
<i>Around the Divisions</i>	5
<i>Quatercentenary of 'The Feminine Monarchie'</i>	6
<i>West Sussex BKA website</i>	6

# Honey Bee Winter Losses

---



Have you heard any beekeeping conversations this year about the high numbers of winter losses? We're curious to know if the 2022/3 winter really was worse than normal but need your help!

Could you please take a few minutes to complete this short, anonymous questionnaire. The questionnaire will remain open until **Sunday 18<sup>th</sup> June**.

<https://forms.gle/rkCWaqb39fEnQzfM6>

We look forward to sharing the results with you.

***Diane Drinkwater***

Chair, BBKA

## Citizen Science 'Optimow'

---

Dear West Sussex Beekeepers

Are you interested in helping to save important flower-visiting insects, all from the comfort of your garden?

My name is Morgan Morrison and I am a PhD student at Royal Holloway, University of London. I work on pollinator conservation and citizen intervention.



I am looking for participants for my citizen science study 'Optimow'. As members of a beekeepers' association your interests and existing knowledge could be great participants for my study. My research is looking to explore the best way you can mow your lawn to make your gardens a better place for important pollinating insects. The study would only take 15-20 minutes a week, all from your garden.

You can sign up using the following link to the Google form, for more details and to register their interest: <https://forms.gle/mhySH8vQ5zqn9eSB7>

Any questions, please don't hesitate to drop me an email.  
Thanks in advance.

***Morgan Morrison***

Email: [morganmowing2023@gmail.com](mailto:morganmowing2023@gmail.com)

Twitter: @morgsmorrison73

Please note: This email has been created for the study and is not my academic email. If you're apprehensive to click unknown links please Google 'mark brown lab optimow'. This will provide you with information and a sign up page.

*This survey may have expired - Ed*

## Chairman's Chat

---



*Chairman, Roger Patterson writes for the County News.*

**S**warming has been very variable this year, with some areas being very light, others very heavy. In two cases, one in the north-west, the other the south-east, I have had lengthy discussions with local beekeepers, who wanted to know if I had any idea what the reason for the increase was.

I firmly believe that many colonies swarm because of beekeepers, so there is a start. In a nest cavity of a free-living colony, there is usually free space, where bees can build more comb if they need it, but in many managed colonies, beekeepers add space too late, often without looking at the colony and predicting what will happen in the next week or two.

An example is that when demonstrating in the West Country recently to a group of 30-40 people, I opened a hive that had wood-to-wood brood, with 4 frames full of sealed brood. I asked what might happen to that colony in the next couple of weeks, but nobody gave me the answer that was screaming at me.

One frame of brood when it emerges produces about 3 frames of bees. Worker brood is sealed for 12 days, so within a short time, there would be another brood box full of bees, that needed space. We had a chat about it and the point was made that it wasn't taught. This is just one example, that often catches out experienced beekeepers, so beginners are likely to be vulnerable.



Bees may have something to do with swarming too, as in both regions previously mentioned I know there has been a long history of beekeepers importing Carniolan queens for sale, with one saying they knew of four sellers in their region. Carniolans, probably because they evolved where the winters are long and cold, therefore winter losses are high, are known to be swarmy, presumably to make up for losses.

**Roger**

[chairman@westsussexbeekeepers.org.uk](mailto:chairman@westsussexbeekeepers.org.uk)

# Wisborough Green Opens New Teaching Apiary

---

*WGBKA celebrates the opening of its new teaching apiary, and more.*

## Celebratory Summer Social on Friday 23<sup>rd</sup> June from 6pm

We have LOTS to celebrate this year:

- ♦ The new fully functioning apiary at Roundstreet Common with storage and parking recently installed
- ♦ West Sussex BKA is 50 years old
- ♦ Roger Patterson has been keeping bees for 60 years



All three are well worth marking with a bit of a party! So, we will be holding an evening barbecue on **Friday 23<sup>rd</sup> June** at the new Roundstreet Common apiary, near Loxwood, with burgers (or vegetarian option), salad and bread provided.

All are invited but you will appreciate, facilities are limited, so please bring your own cutlery, plate, as well as your own drinks.

To help us to cater for the right number, if you intend to join us, please send an email to Judy Knight at [judy.m.knight@icloud.com](mailto:judy.m.knight@icloud.com) with numbers attending and whether you require a vegetarian meal.

We look forward to seeing as many of you as possible.

***Richard Dyer***

Wisborough Green Beekeepers

[www.wgbka.org.uk/index.html](http://www.wgbka.org.uk/index.html)



## Around the Divisions

---

All Members are welcome to attend any Divisional meeting, but please advise the organiser if you plan to attend.

### Central Sussex Division

Full details of the Division's activities from: [secretary@centralsussexbeekeepers.org.uk](mailto:secretary@centralsussexbeekeepers.org.uk) or the Division's website: <https://centralsussexbeekeepers.org.uk/>

### Chichester Division

**Wednesday 21<sup>st</sup> June** - 'Bring and Buy Event', from 7:30pm at Boxgrove Village Hall, The Street, Boxgrove, PO18 OEE.

Further details of the Division's activities from: Cheryl Barton,

[secretary@chichesterbeekeepers.co.uk](mailto:secretary@chichesterbeekeepers.co.uk) or the Division's website: [www.chichesterbeekeepers.co.uk](http://www.chichesterbeekeepers.co.uk).



### Wisborough Green Division

**Friday 23<sup>rd</sup> June** - 'Celebratory Summer Social' from 6pm at Roundstreet Common apiary. See details in this month's Newsletter.

Further details of the Division's activities from: Martina Hendry, [secretary@wgbka.org.uk](mailto:secretary@wgbka.org.uk) or website: [www.wgbka.org.uk](http://www.wgbka.org.uk).

The Division's Newsletter may be viewed or downloaded here: [www.wgbka.org.uk/Newsletters.html](http://www.wgbka.org.uk/Newsletters.html)

### Worthing Division

Full details of the Division's activities from: Debra Edwards, [dmcd.edwards@gmail.com](mailto:dmcd.edwards@gmail.com) or the Division's website: [www.worthing-beekeepers.org](http://www.worthing-beekeepers.org)



## ...and a Date for your Diary

**Friday 9<sup>th</sup> - Sunday 11<sup>th</sup> June** - 'South of England Show' featuring the Bees & Honey marquee. Ardingly Showground, Selsfield Road, RH17 6TL.

Further details from the Society's website: [www.seas.org.uk/](http://www.seas.org.uk/) and last month's Newsletter.

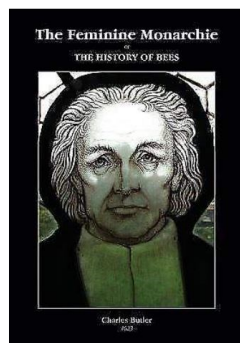
*'Share your Division's activities with readers of the County News'*

*We are on facebook so if you would like your events featured please send details to the Editor.*



...and finally

## Quatercentenary of 'The *Feminine Monarchie*'



'The *Feminine Monarchie*' has been referred to in the beekeeping world as 'a book for all times'.

Written in 1623 it is celebrating its quatercentenary this year, although its author, the Reverend Charles Butler (1571 – 1647), had written a number of earlier versions, the first in 1609. At the time his book was considered revolutionary.

He learned by observation, questioning and experimentation, not by repeating what had been written before. In this respect he was ahead of his time as even today many new books on the craft of keeping honey bees repeat what has been written previously, whether right or wrong!

He practiced a form of 'natural' beekeeping. This long before the invention of the movable-frame hive, and he understood that losses were an essential part of building resilience into his stock. Whether a colony survived or not was left to nature. Although, of course skep beekeeping at that time involved destroying many of the bees to harvest the honey.

To celebrate this quatercentenary *BeeCraft* has commissioned an excellent article from Andrea Hill. This complete article is available in the June 2023 magazine and in the online copy.

*'The Feminine Monarchie'* is available from Northern Bee Book, Thorne and other book suppliers.

### MEMBERS' COUNTY NEWSLETTER

Thanks to all this month's contributors. If you don't have access to the internet and want further details of anything in this newsletter, please contact the Editor & County Secretary. Likewise, if you would like to contribute to future newsletters please send articles and photographs to:

Graham Elliott, Editor & County Secretary, no later than the 20<sup>th</sup> of the preceding month.  
[secretary@westsussexbeekeepers.org.uk](mailto:secretary@westsussexbeekeepers.org.uk)

**We're on the web:**  
[www.westsussexbeekeepers.org.uk](http://www.westsussexbeekeepers.org.uk)



Follow us  
On  
Facebook

Previous newsletters from the last 12 months are available on the website.

